

**NARRATIVE**

A DEPENDENT RESURVEY  
SITUATED IN SECTIONS 2, 3, 4, 5, 10 AND 11, T.7S., R.28E., W.M.,  
GRANT COUNTY, OREGON  
SURVEY COMPLETED OCTOBER 20, 2022

This survey was performed for the Umatilla National Forest with the following purposes:

1. To delineate the boundaries between private land and national forest system land in Sections 10 and 11, T.7S., R.28E., W.M.
2. To connect previously remonumented corners using survey measurements.
3. To locate certain controlling corners in preparation for the subdivision of Section 5, T.7S., R.28E., W.M.

A search was made of the available records pertaining to this survey. A history of the relevant surveys are as follows:

1. The survey of the exterior lines of Township 6 South, Range 28 East was performed by Edward W. Sanderson, U.S. Deputy Surveyor, under Contract No. 368 dated September 7, 1880.
2. The resurvey of the exterior lines and survey of the subdivisional lines of Township 7 South, Range 28 East was performed by Frank W. Campbell, U.S. Deputy Surveyor, under Contract No. 521 dated January 8, 1885.
3. Remonumentation of certain original corners performed under contract for the Umatilla National Forest by Duane I. Griffith, PLS 644. See corner monumentation records filed September 8, 1974, in the Grant County Surveyor's office.

Field measurements were made to recover appurtenant controlling monuments from the aforementioned surveys. At each corner location, a thorough search was made for any remaining corner evidence, which was evaluated as follows:

T.6S., R.28E.:

(Z-5) Southwest corner Section 32: Found stone 14"x14"x6" (record: 12"x12"x6") lying loose, marked with 5 grooves on one face, 6 grooves on adjacent face, and 1 groove on opposite face. I also found the original northeast bearing tree (live), and the dead and down remains of the southwest bearing tree. Through subsequent measurements from the found bearing trees, it became evident that the stone had slid down the hill about 5 feet. It was also determined that the original surveyor was measuring slope distances instead of horizontal. The corner was reestablished at G.L.O. record bearing and slope distance from the found southwest bearing tree.

(Z-7) South 1/4 corner Section 32: Found stone 14"x12"x7" (record: 14"x12"x7") in a 3 ft. diameter embedded mound of approximately 8 other stones. The stone was rough and deteriorated, and I could find no marks. The search area was otherwise devoid of call size stones. Although the position of this stone did not fit well when comparing measured distances

against record distances to the nearest found corners to the east and west, the alignment was harmonious. I accept the position of the found stone as the best available evidence of the original corner.

(Z-9) Southeast corner Section 32: Found stone 21"x15"x8" (record: 20"x14"x8") tipped over in the center of a 3 ft. diameter mound of stone. When the stone was stood upright, it was properly marked with 2 grooves on the west, 6 grooves on the north, and 4 grooves on the east. I also found one of the original bearing trees which had been recorded in the incorrect quadrant. I accept the position of the found marked stone for the section corner.

T.7S., R.28E.:

(A-5) Northwest corner Section 5: Found stone 18"x10"x9" (record: 16"x10"x10") marked with 5 notches on the east edge, 1 notch on the west edge, and 6 notches on the south edge, set 3" in the ground with a 2.5 ft. diameter mound of stone west and alongside. I also found the dead and down remains of the original southwest bearing tree. I accept the position of the found marked stone for the section corner.

(A-9) Northeast corner Section 5: After a diligent search, I found no remaining evidence of the original corner. I declare this corner lost and reestablish its position by single proportionate measure. The position of this corner was calculated, as shown on the annexed plat, but not monumented at this time. It is the intent that this corner will be monumented if Section 5 is subdivided in the future.

(A-17) Northwest corner Section 2: Found an unmarked stone, 17"x8"x5" (record 16"x10"x6"), set upright in the center of a 4 ft. diameter mound of stone. I accept the found stone for the section corner. I did not remonument this corner, as it was tied for corroborative evidence only.

(A-21) Northeast corner Section 2: Found Griffith's 1974 brass-capped monument which is a perpetuation of original evidence and is accepted for the position of the section corner.

(C-9) East 1/4 corner Section 5: Found Griffith's 1974 brass-capped monument which is a perpetuation of original evidence and is accepted for the position of the 1/4 section corner.

(C-17) West 1/4 corner Section 2: Found an unmarked stone, 29"x11"x4" (record: 24"x10"x5"), tipped over in the center of a 6 ft. diameter mound of stone. I accept the stone as the best available evidence of the original 1/4 corner.

(C21) East 1/4 corner Section 2: Found a 4 ft. diameter mound of stones containing two call-size stones with no marks identified. I also found a ponderosa pine snag with a Pilot Rock Lumber Company K-tag attached, which bears S.70°E., 30 ft. from the mound of stone. The K-tag is marked for the 1/4 corner, dated 4/28/1959, and is also marked "30' W". Other markings are illegible. I searched for but found no remains of the original bearing tree. This corner is harmoniously related to the found accepted monument at the southeast corner of Section 2

and fits reasonably well with G.L.O. topo calls to the north and south. I accept the mound of stone as the best available evidence of the original corner. I did not remonument this corner, as it was tied for corroborative evidence only.

(E-9) Southeast corner Section 5: Found Griffith's 1974 brass-capped monument which is a perpetuation of original evidence and is accepted for the position of the section corner.

(E-11) South 1/4 corner Section 4: Found Griffith's 1974 brass-capped monument which is a perpetuation of original evidence and is accepted for the position of the 1/4 section corner.

(E-13) Southeast corner Section 4: Found Griffith's 1974 brass-capped monument which is a perpetuation of original evidence and is accepted for the position of the section corner.

(E-15) South 1/4 corner Section 3: Found stone 15"x12"x10" (record: 12"x12"x10"), set 10" in the ground, marked 1/4, with one other stone alongside. I also found the original northwest bearing tree (a snag) at G.L.O. record bearing and distance. I also searched for, but found no remains of the southwest bearing tree. I accept the position of the found marked stone for the 1/4 corner.

(E-17) Southeast corner Section 3: Found stone 14"x7"x6" (record: 14"x8"x6"), marked with 5 grooves on one face, found lying loose along an east-west fence approximately 6.5 ft. East of a gate post supported by a rock jack. I also found a Heppner Lumber Company K-tag lying on the ground, marked for the section corner, dated 4/6/1953 and containing the initials GRP and ALP with other fragmentary markings. The rock jack had been recently rebuilt, with the old material being piled nearby. The USFS corner search record dated 1975 stated that the marked stone had been found in the rock jack. During the course of this survey, I recovered acceptable evidence at the nearest 1/4 corners to the North, East, South and West. I found that the gate post/rock jack is harmoniously related to said corners and represents the best available evidence of the original section corner.

(E-19) South 1/4 corner Section 2: Found an unmarked stone 16"x10"x5" (record: 16"x8"x4"), set 7" in the ground in a prominent 3 ft. diameter embedded mound of stone. I also found the possible charred remains of the bearing tree. The position of the found stone is harmoniously related to the section corners east and west and fits the G.L.O. topo call to the top of the hill 3.16 chains west. I accept the position of the stone as the best available evidence of the 1/4 corner.

(E-21) Southeast corner Section 2: Found stone 15"x10"x6" (record: 14"x10"x6"), marked with 5 grooves on one face and 1 notch on adjacent edge, lying flat with no mound of stone. I accept the position of the marked stone for the section corner.

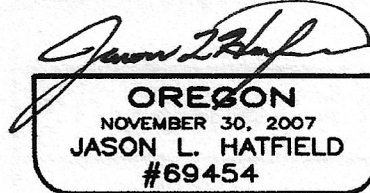
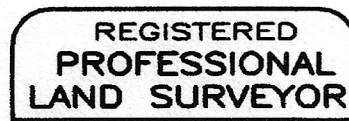
(G-17) West 1/4 corner Section 11: Found stone 12"x8"x5" (record: 15"x8"x6"), dimly marked 1/4, lying face down on east side of a 3 ft. diameter embedded mound of stone. I accept the position of the marked stone for the 1/4 section corner.

The East 1/16 Corner between Sections 3 and 10 was set at midpoint between the South 1/4 Corner and Southeast Corner of Section 3.

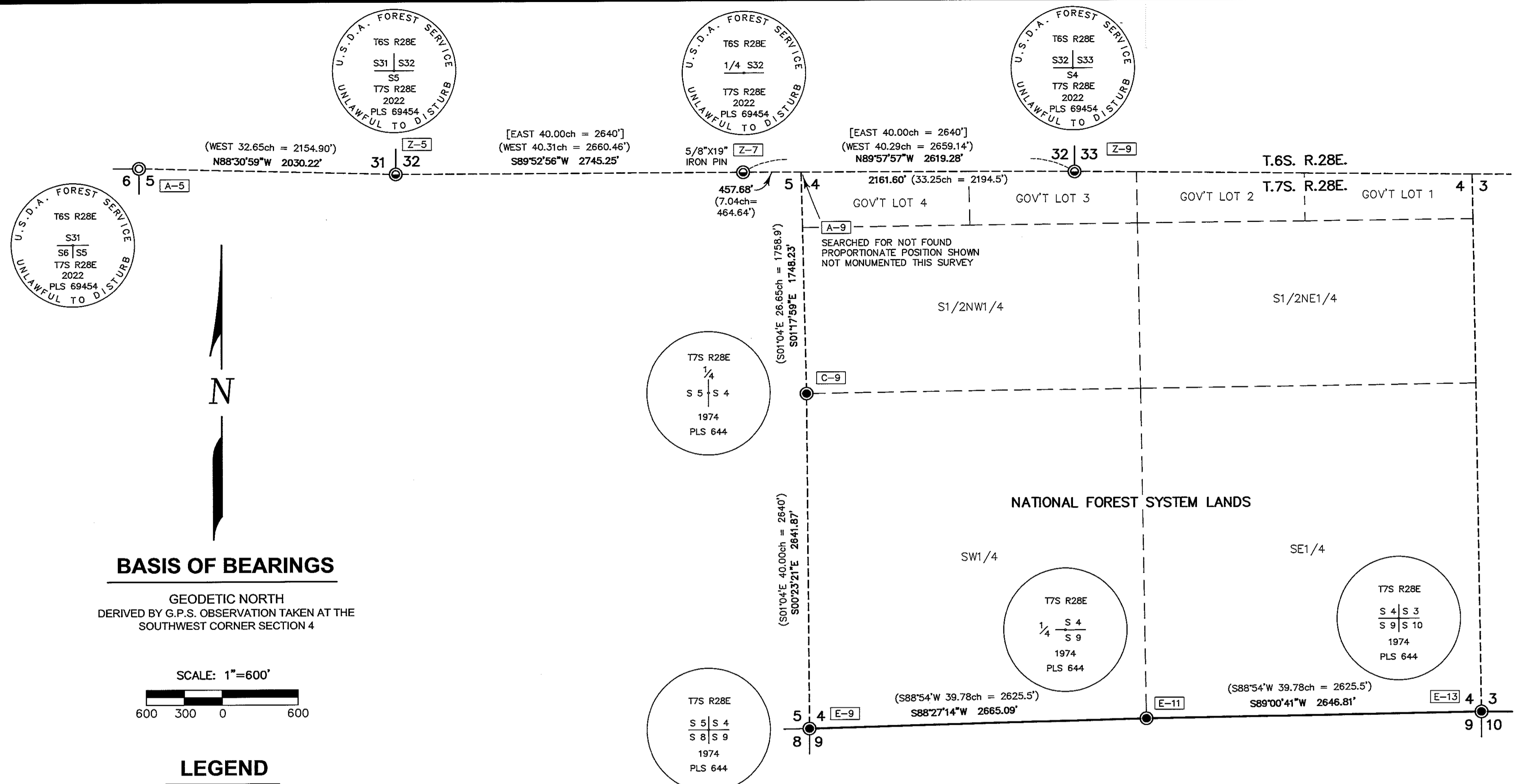
This survey was performed with reference to the 2009 B.L.M. Manual of Surveying Instructions. New monuments were set according to the evidence found and the methods described herein. See the corner monumentation records filed separately for more details regarding the corner evidence found, new monuments set, and corner accessories established.

Those portions of the national forest boundary adjoining private land were posted with aluminum posts and boundary signs, as depicted on the annexed plat.

USDA Forest Service  
Northeast Oregon Land Zone  
1550 Dewey Avenue, Suite A  
Baker City, OR 97814

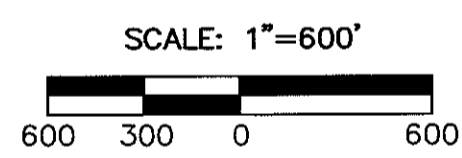


EXPIRES: 6/30/2023



### BASIS OF BEARINGS

GEODETIC NORTH  
 DERIVED BY G.P.S. OBSERVATION TAKEN AT THE  
 SOUTHWEST CORNER SECTION 4



### LEGEND

- ◆ FOUND ORIGINAL G.L.O. CORNER EVIDENCE - NOT REMONUMENTED THIS SURVEY, TIED TO CORROBORATE THE POSITION OF OTHER FOUND CORNERS
- FOUND 2 1/2" GALV. IRON PIPE WITH ATTACHED 2 1/2" BRASS CAP REMONUMENTED FROM ORIGINAL EVIDENCE IN 1974 BY DUANE I. GRIFFITH, PLS - SEE CORNER MONUMENTATION RECORDS FILED IN THE GRANT COUNTY SURVEYOR'S OFFICE
- ⊙ SET A 5/8" IRON PIN GROUTED INTO BEDROCK WITH ATTACHED 3 1/2" USFS BRASS CAP MARKED AS SHOWN (PIN IS 16" LONG UNLESS OTHERWISE NOTED) SEE CORNER MONUMENTATION RECORDS FILED SEPARATELY FOR MORE DETAILS
- ⊙ SET A 2 1/2"X30" ALUMINUM PIPE WITH 3 1/2" USFS ALUMINUM CAP MARKED AS SHOWN - SEE CORNER MONUMENTATION RECORDS FILED SEPARATELY FOR MORE DETAILS
- [ ] RECORD BEARING AND DISTANCE FROM 1880 GENERAL LAND OFFICE SURVEY BY EDWARD W. SANDERSON, U.S. DEPUTY SURVEYOR UNDER CONTRACT NO. 368
- ( ) RECORD BEARING AND DISTANCE FROM 1885 GENERAL LAND OFFICE SURVEY BY FRANK W. CAMPBELL, U.S. DEPUTY SURVEYOR UNDER CONTRACT NO. 521
- { } RECORD BEARING AND DISTANCE FROM DEED NO. 203051, FILED DECEMBER 22, 2000, IN THE OFFICE OF THE GRANT COUNTY CLERK
- A-5 PLSS CORNER INDEX DESIGNATION
- ////// BOUNDARY LINE POSTED THIS SURVEY USING ALUMINUM POSTS WITH NATIONAL FOREST BOUNDARY SIGNS ATTACHED
- x- FENCE

### NARRATIVE

SEE NARRATIVE FILED SEPARATELY, ATTACHED HERETO  
 AND BY THIS REFERENCE MADE A PART HEREOF

### REFERENCES

- GRANT COUNTY CORNER MONUMENTATION RECORDS
- GRANT COUNTY DEED RECORD INSTRUMENT NO.'S 203051 AND 20101625
- GENERAL LAND OFFICE RECORDS
- U.S. FOREST SERVICE CORNER RECORDS

RECEIVED BY  
 Morrow County Surveyor

Date: 2-15-2023  
 Rec'd By: MPK  
 No.: 2023-2028C  
 Folder No.: 2028

I HEREBY CERTIFY THAT THIS SURVEY WAS PERFORMED AT THE  
 REQUEST OF THE UMATILLA NATIONAL FOREST

*Eric Watrud*  
 Digitally signed by ERIC WATRUD  
 Date: 2023.02.01 10:10:51 -08'00'

FOREST SUPERVISOR DATE

REGISTERED  
 PROFESSIONAL  
 LAND SURVEYOR

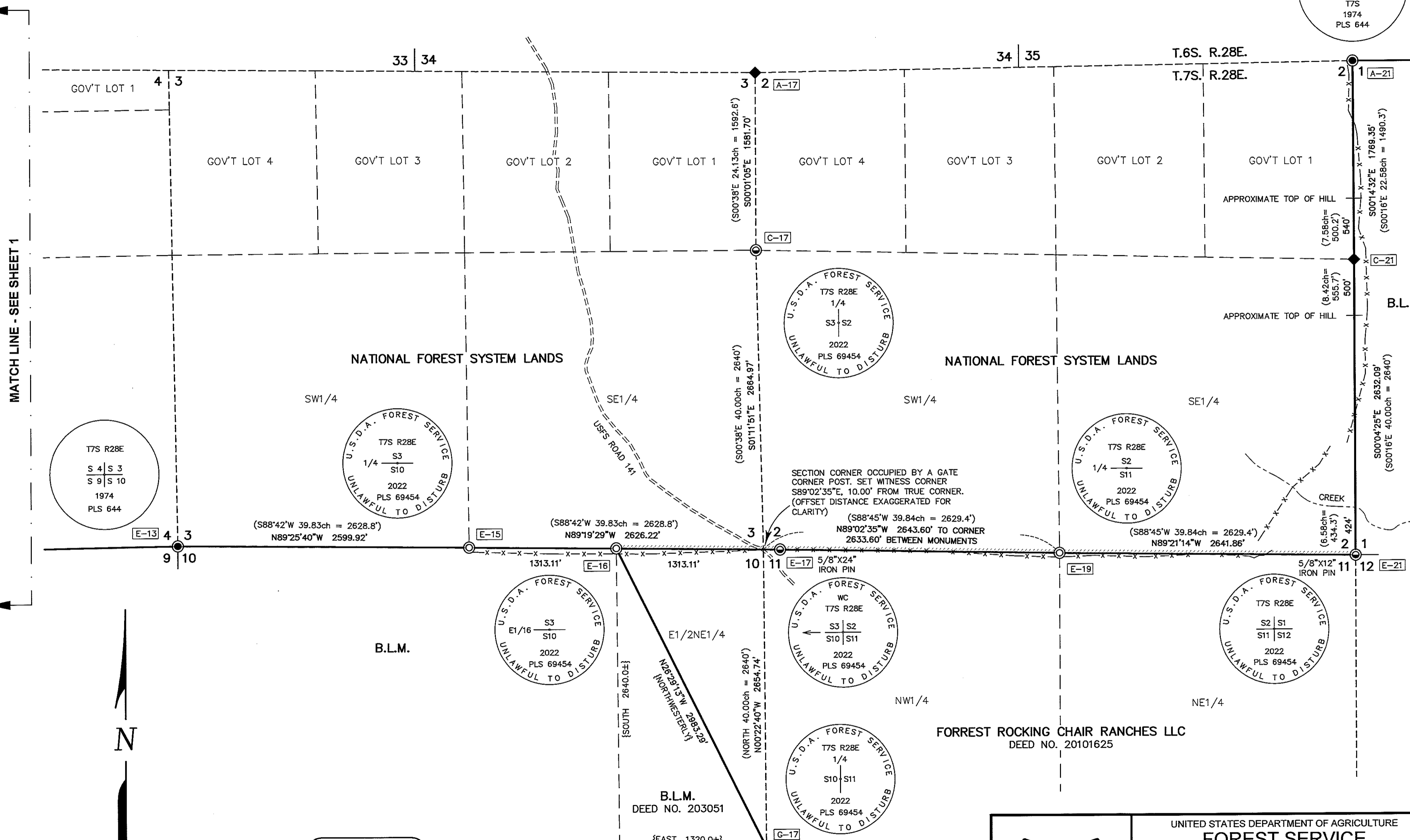
*Jason L. Hatfield*  
 OREGON  
 NOVEMBER 30, 2007  
 JASON L. HATFIELD  
 #69454  
 EXPIRES: 6/30/2023



UNITED STATES DEPARTMENT OF AGRICULTURE <b>FOREST SERVICE</b>		
REGION 6 - NORTHEAST OREGON LAND ZONE 1550 DEWEY AVENUE, SUITE A - BAKER CITY, OREGON 97814 - (541) 523-1283		
MAP OF SURVEY A DEPENDENT RESURVEY SITUATED IN SECTIONS 2, 3, 4, 5, 10, AND 11, T.7S., R.28E., W.M., GRANT COUNTY, OREGON		
SURVEYED FOR	UMATILLA NATIONAL FOREST	
SURVEYED BY	JLH & DBL	SURVEY COMPLETED: 10/20/2022
SCALE: 1"= 600'	DRAWN BY: JLH	SHEET 1 OF 2

MATCH LINE - SEE SHEET 2

T6S R28E  
S 35  
S 5 | S 1  
T7S  
1974  
PLS 644



MATCH LINE - SEE SHEET 1

T7S R28E  
S 4 | S 3  
S 9 | S 10  
1974  
PLS 644

U.S.D.A. FOREST SERVICE  
T7S R28E  
S3  
1/4  
S10  
2022  
PLS 69454  
UNLAWFUL TO DISTURB

U.S.D.A. FOREST SERVICE  
T7S R28E  
1/4  
S3 | S2  
2022  
PLS 69454  
UNLAWFUL TO DISTURB

U.S.D.A. FOREST SERVICE  
T7S R28E  
1/4  
S2  
S11  
2022  
PLS 69454  
UNLAWFUL TO DISTURB

U.S.D.A. FOREST SERVICE  
S3  
E1/16  
S10  
2022  
PLS 69454  
UNLAWFUL TO DISTURB

U.S.D.A. FOREST SERVICE  
WC  
T7S R28E  
S3 | S2  
S10 | S11  
2022  
PLS 69454  
UNLAWFUL TO DISTURB

U.S.D.A. FOREST SERVICE  
T7S R28E  
S2 | S1  
S11 | S12  
2022  
PLS 69454  
UNLAWFUL TO DISTURB

U.S.D.A. FOREST SERVICE  
T7S R28E  
1/4  
S10 | S11  
2022  
PLS 69454  
UNLAWFUL TO DISTURB

**BASIS OF BEARINGS**  
GEODETIC NORTH  
DERIVED BY G.P.S. OBSERVATION TAKEN AT THE  
SOUTHWEST CORNER SECTION 4

REGISTERED  
PROFESSIONAL  
LAND SURVEYOR  
*Jason L. Hatfield*  
OREGON  
NOVEMBER 30, 2007  
JASON L. HATFIELD  
#69454  
EXPIRES: 6/30/2023

SCALE: 1"=600'  
600 300 0 600

RECEIVED BY  
Morrow County Surveyor  
Date: 2-15-2023  
Rec'd By: MPK  
No.: 2023-2028C  
Folder No.: 2028



UNITED STATES DEPARTMENT OF AGRICULTURE  
**FOREST SERVICE**  
REGION 6 - NORTHEAST OREGON LAND ZONE  
1550 DEWEY AVENUE, SUITE A - BAKER CITY, OREGON 97814 - (541) 523-1283  
MAP OF SURVEY  
A DEPENDENT RESURVEY  
SITUATED IN SECTIONS 2, 3, 4, 5, 10, AND 11, T.7S., R.28E., W.M.,  
GRANT COUNTY, OREGON  
SURVEYED FOR: UMATILLA NATIONAL FOREST  
SURVEYED BY: JLH & DBL SURVEY COMPLETED: 10/20/2022  
SCALE: 1"= 600' DRAWN BY: JLH SHEET 2 OF 2