

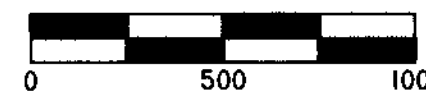


MORROW COUNTY

RECORD OF SURVEY FOR BLA

A MEANDER LINE SURVEY OF THE FENCE LINE BETWEEN CURRENT TAX LOTS 1800 & 1000 OF ASSESSOR'S MAP 2S29, LOCATED IN THE EAST HALF OF SECTION 22, T2S, R29E, W.M., MORROW COUNTY, OREGON.

SCALE 1"=500'



BASIS OF BEARING

BEARING BASE - S1/4 TO SE COR. OF S22 BY CORPSCON 6.0

SURVEYOR'S NARRATIVE:

THIS SURVEY WAS PERFORMED AT THE REQUEST OF BILL ALEXANDER, REPRESENTATIVE OF CUNNINGHAM SHEEP COMPANY, TO MEANDER THE FENCELINE IN THE EAST HALF OF SECTION 22, T2S, R29E TO PERFORM A BOUNDARY LINE ADJUSTMENT BETWEEN TAX LOT 1800 (JOE DOHERTY SHEEP) AND TAX LOT 1000 (CUNNINGHAM SHEEP).

DENNIS GAYLORD FOUND THE ORIGINAL GLO CORNERS, AS NOTED, AND MONUMENTED THEM, EXCEPTING THE NORTH QUARTER AND THE WEST QUARTER CORNERS WHICH BOTH FALL IN HIGHWAY 74 RIGHT-OF-WAY AND CONSTRUCTION AREA.

I TIE THE GAYLORD MONUMENTS AND SHOW THE SECTIONAL BREAKDOWN UTILIZING THOSE MONUMENTS TO DETERMINE THE DEEDED BOUNDARIES BETWEEN THE PROPERTIES. THERE IS A RELATIVELY NEW FENCE THAT HAS BEEN CONSTRUCTED AND I WAS INSTRUCTED TO MEANDER THIS FENCE LINE AND IT WOULD BECOME THE ADJUSTED BOUNDARY BETWEEN THE TWO TAX LOTS. I AM NOT SHOWING THE ENTIRETY OF BOTH TAX LOTS BECAUSE OF THEIR SIZE, BUT ONLY THE AFFECTED AREA OF ADJUSTMENT.

THE ADJUSTED AREA IS BASED ON BLM MANUAL OF INSTRUCTIONS FOR THE SUBDIVISION OF A SECTION. I USE ARMY CORPS OF ENGINEERS CORPSCON 6.0 SOFTWARE TO CALCULATE CORRECTIONS FROM RTK GPS OBSERVATIONS TO TRUE NORTH, AS THE BEARING BASE FOR THIS SURVEY. I USED A COMBINED SCALE FACTOR OF 0.99942084 FOR GROUND TO GRID RTK GPS TRANSFORMATION, AND A ROTATION OF 0°55'24" CLOCKWISE FROM GRID TO TRUE NORTH.

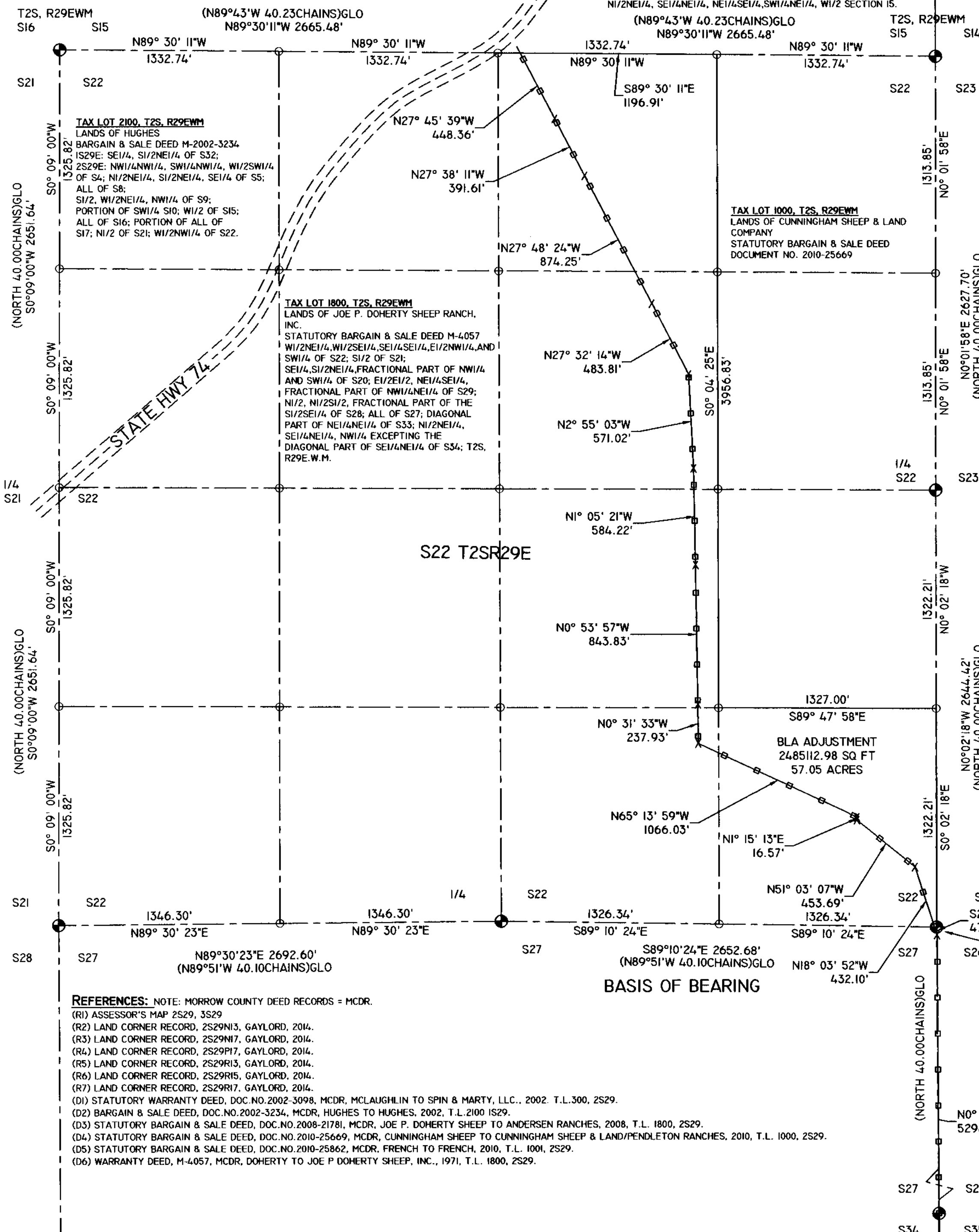
THIS SURVEY WAS PERFORMED USING A SOKKIA GSR 2700IS RTK GPS SYSTEM, AND A SOKKIA SET500 ELECTRONIC TOTAL STATION. STANDARD ERROR FOR THE RTK SYSTEM IS 10.0MM + 1 PPM X BASELINE MEASURED, AND THE TOTAL STATION IS +/- (3+2PPM X DISTANCE) IN MILLIMETERS.

I FIND NOTHING OUT OF THE ORDINARY ON THIS SURVEY.

Robert D. English
ROBERT D. ENGLISH, ORPLS43406LS

RECEIVED BY
Morrow County Surveyor

Date: 9-29-22
Rec'd By: *MPK*
No.: 2027-2006C
Folder No.: 2006



- LEGEND**
- NOT USED ● SET 2-1/2" BRASS CAP ON 1-1/4" GALVANIZED IRON PIPE, IN MOUND OF STONES.
 - ⊕ BRASS CAP MONUMENT, BY GAYLORD, FROM ORIGINAL EVIDENCE.
 - x ANGLE POINT IN FENCE, NOTHING SET.
 - CALCULATED POINT, NOTHING SET OR FOUND.
 - (R1) OR (D1) REFERENCE DOCUMENT -- SEE REFERENCES.
 - PROPERTY BOUNDARY
 - - - - - EXISTING STATE HIGHWAY 74
 - - - - - SECTION LINES
 - EXISTING FENCELINES

- REFERENCES:** NOTE: MORROW COUNTY DEED RECORDS = MCDR.
- (R1) ASSESSOR'S MAP 2S29, 3S29
 - (R2) LAND CORNER RECORD, 2S29N13, GAYLORD, 2014.
 - (R3) LAND CORNER RECORD, 2S29N17, GAYLORD, 2014.
 - (R4) LAND CORNER RECORD, 2S29P17, GAYLORD, 2014.
 - (R5) LAND CORNER RECORD, 2S29R13, GAYLORD, 2014.
 - (R6) LAND CORNER RECORD, 2S29R15, GAYLORD, 2014.
 - (R7) LAND CORNER RECORD, 2S29R17, GAYLORD, 2014.
 - (D1) STATUTORY WARRANTY DEED, DOC.NO.2002-3098, MCDR, MCLAUGHLIN TO SPIN & MARTY, LLC., 2002, T.L.300, 2S29.
 - (D2) BARGAIN & SALE DEED, DOC.NO.2002-3234, MCDR, HUGHES TO HUGHES, 2002, T.L.2100 1S29.
 - (D3) STATUTORY BARGAIN & SALE DEED, DOC.NO.2008-21781, MCDR, JOE P. DOHERTY SHEEP TO ANDERSEN RANCHES, 2008, T.L. 1800, 2S29.
 - (D4) STATUTORY BARGAIN & SALE DEED, DOC.NO.2010-25669, MCDR, CUNNINGHAM SHEEP TO CUNNINGHAM SHEEP & LAND/PENDLETON RANCHES, 2010, T.L. 1000, 2S29.
 - (D5) STATUTORY BARGAIN & SALE DEED, DOC.NO.2010-25862, MCDR, FRENCH TO FRENCH, 2010, T.L. 1001, 2S29.
 - (D6) WARRANTY DEED, M-4057, MCDR, DOHERTY TO JOE P DOHERTY SHEEP, INC., 1971, T.L. 1800, 2S29.

REGISTERED PROFESSIONAL LAND SURVEYOR
Robert D. English
OREGON JANUARY 11, 2005
ROBERT DOUGLAS ENGLISH
43406LS
RENEWAL DATE: 12/31/23

DATE: 05/10/18	DWN. BY: RDE	RECORD OF SURVEY FOR BLA FOR: CUNNINGHAM SHEEP COMPANY 303 SW 3RD STREET PENDLETON, OREGON 97801
SCALE: 1"=500'	CHK. BY: RDE	
JOB NO. 2017-003	REV. DATE: 07/25/22	SURVEY ONE,LLC P.O. BOX 382 PENDLETON OR, 97801 Ph:541-276-2055 Fax:541-276-3480
DWG NO. CSHEEPMOCO R8S-S22.DWG		

9002

2006