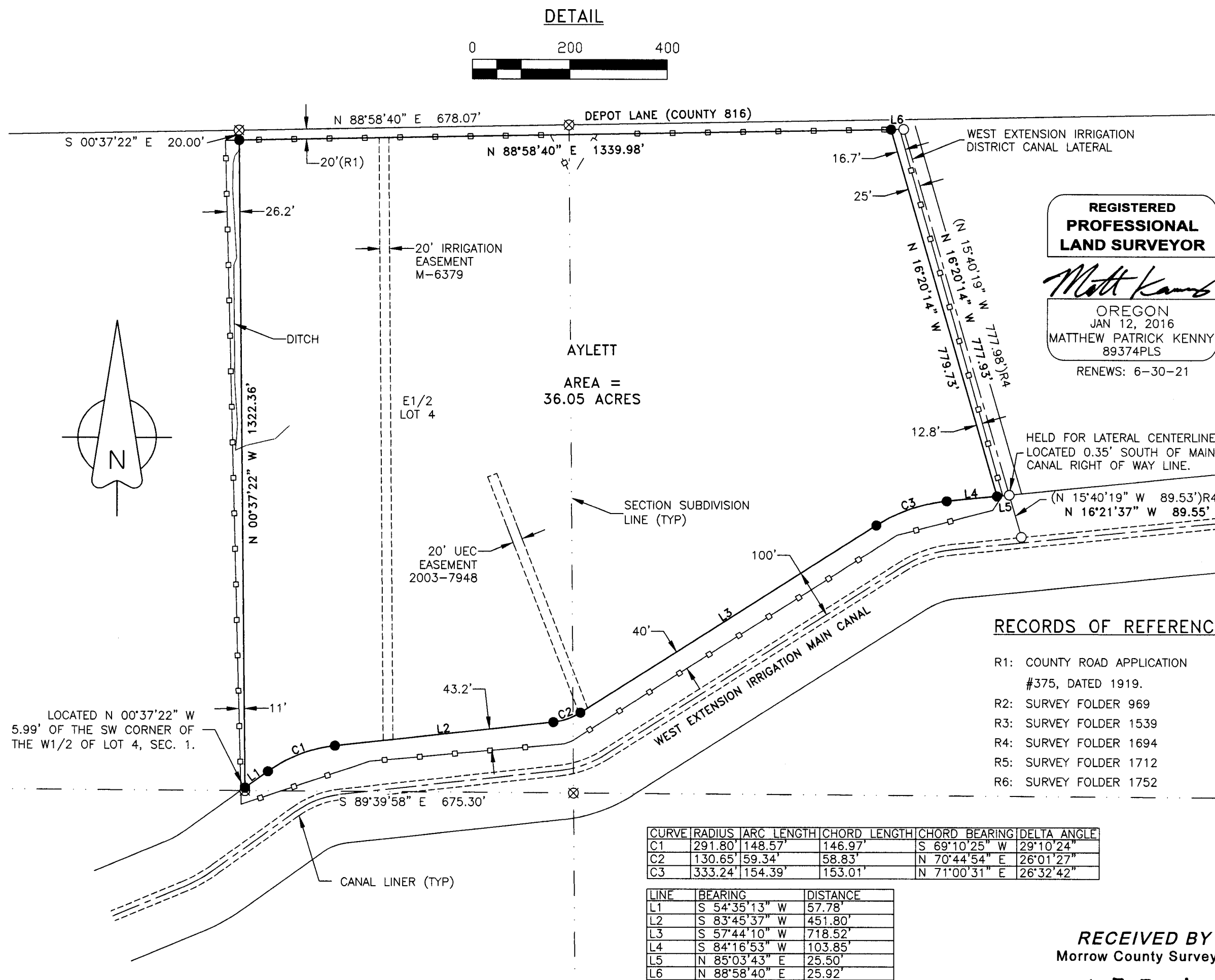


RECORD OF SURVEY

LOCATED IN THE NW 1/4 OF SECTION 1, TOWNSHIP 4 NORTH, RANGE 26 EAST, WILLAMETTE MERIDIAN, MORROW COUNTY, OR



CORNER NOTES

- Ⓐ SOUTHEAST CORNER OF SECTION 36, T5N, R26E. FOUND AND HELD 2-3/8" BRASS CAP PER CORNER CERTIFICATE 5N26Z25.
- Ⓑ FOUND 5/8" REBAR WITH YELLOW PLASTIC CAP MARKED LS2850, LIKELY FROM FOLDER 969(R2). THIS CAP IS ALSO REPORTED IN SURVEY FOLDER'S 1712(R5) AND 1752(R6). POSITION OF REBAR BEARS SOUTH 00°39'38" EAST, 4.13 FEET FROM LOCATION OF CLOSING CORNER; COMPUTED BY HOLDING LOCATION OF SAID REBAR AND PROJECTING RECORD BEARING ALONG EAST LINE OF SECTION 1 AS SHOWN IN R5 & R6 TO INTERSECT THE SOUTH LINE OF SECTION 36 (DETERMINED BY HOLDING MEASURED LINE BETWEEN CORNER'S "A" & "C"). THIS IS CONSISTENT WITH METHODS USED IN R5 AND R6.
- Ⓒ SOUTH QUARTER CORNER OF SECTION 36, T5N, R26E. FOUND AND HELD 2-1/2" 1915 GLO BRASS CAP, UP 17" FROM GROUND SURFACE.
- Ⓓ NORTH QUARTER CORNER OF SECTION 1, T4N, R26E. FOUND AND HELD 3" ALUMINUM CAP MARKED 10-2, U.S. ARMY CORPS OF ENGINEERS, 1987. SEE SURVEY FOLDER'S 1694(R4), 1712(R5), AND 1752(R6).
- Ⓔ NORTHWEST CORNER OF SECTION 1, T4N, R26E. MAGNETIC LOCATER INDICATES SECTION CORNER IS UNDER THE NEW ASPHALT. TO COMPUTE CORNER LOCATION, FOUND AND HELD THREE REFERENCE MONUMENTS AS REPORTED IN CORNER CERTIFICATE 4N26A21. ALSO SEE SURVEY FOLDER 1539(R3). MONUMENTS ARE 5/8" REBAR WITH YPC MARKED 951.
- Ⓕ WEST QUARTER CORNER OF SECTION 1, T4N, R26E. FOUND AND HELD 2-3/8" BRASS CAP PER CORNER CERTIFICATE 4N26C21 AND SURVEY FOLDER 1539(R3).
- Ⓖ SOUTH QUARTER CORNER OF SECTION 1, T4N, R26E. RECORD BRASS CAP HAS BEEN REMOVED BY FARMING. BITS OF CARSONITE POST REMAIN ±18" BELOW GROUND WHERE CORNER ONCE WAS. CALCULATED LOCATION AT RECORD BEARING AND DISTANCE FROM CAMP REES MON. NO. 8 PER SURVEY FOLDER 1712(R5).
- Ⓗ SOUTHEAST CORNER OF SECTION 1, T4N, R26E. COMPUTED LOCATION AT RECORD BEARING AND DISTANCE FROM COMPUTED CORNER "G" ABOVE. DATA USED FOR COMPUTATION IS PER SURVEY FOLDER 1712(R5).
- Ⓖ EAST QUARTER CORNER SECTION 1, T4N, R26E. COMPUTED LOCATION BY SINGLE PROPORTIONATE MEASURE BETWEEN CORNER'S "B" AND "H".

LEGEND

- Ⓐ FOUND AND HELD SECTION OR QUARTER SECTION CORNER. SEE CORNER NOTES FOR DETAILS.
- FOUND AND HELD 5/8" REBAR WITH YELLOW PLASTIC CAP MARKED 951. SEE SURVEY FOLDER 1694(R4).
- FOUND 3-1/4" ALUMINUM CAP MARKING CAMP REESE LICENSE BOUNDARY PER SURVEY FOLDER 1712(R5).
- SET 5/8" X 30" STEEL REBAR WITH 1-1/4" PINK PLASTIC CAP, MARKED "KENNY LS 89374".
- Ⓐ ⊗ CALCULATED POSITION, NOTHING SET. SEE CORNER NOTES FOR DETAILS. THOSE POSITIONS WITHOUT NOTES WERE COMPUTED WITH REFERENCE TO THE US MANUAL OF SURVEYING INSTRUCTIONS.
- () RECORD DATA REFERENCE. SEE RECORD REFERENCES FOR ADDITIONAL INFORMATION.
- [] RECORD DATA FROM DEPENDENT RESURVEY OF T4N R26E BY OTIS O. GOULD UNDER GROUP NO. 217, FILED APRIL 18, 1941.
- — — — — EXISTING FENCE LINE LOCATION
- — — — — CANAL/LATERAL CENTERLINE

SURVEY NARRATIVE

THIS SURVEY HAS BEEN PREPARED AT THE REQUEST OF ELISHA AYLETT. THE PURPOSE OF THIS SURVEY IS TO MARK THE BOUNDARIES OF THAT PROPERTY DESCRIBED UNDER STATUTORY WARRANTY DEED RECORDED UNDER DOCUMENT NUMBER 2020-47824, MORROW COUNTY CLERK RECORDS.

THE PROPERTY IS BOUNDED ON THE NORTH BY THE NORTH LINE OF THE NORTHWEST QUARTER OF SECTION 1, ON THE WEST BY THE WEST LINE OF THE EAST HALF OF LOT 4 OF SECTION 1, ON THE SOUTH BY THE NORTH BOUNDARY OF THE WEST EXTENSION IRRIGATION MAIN CANAL, AND ON THE EAST BY THE WESTERLY BOUNDARY OF THE EXISTING NORTH-SOUTH WEST EXTENSION IRRIGATION LATERAL.

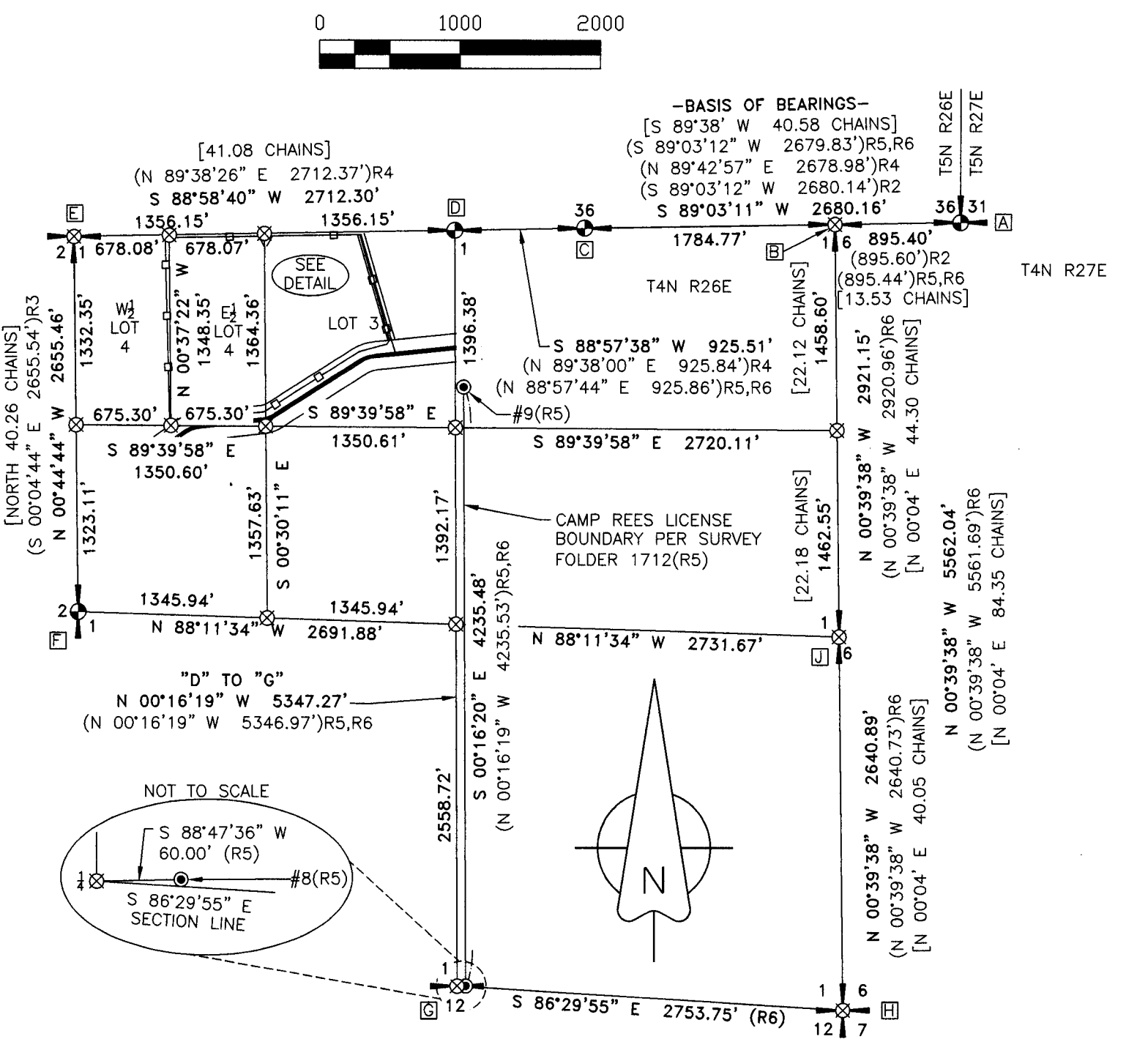
THE NORTH LINE OF THE NORTHWEST QUARTER OF SECTION 1 WAS DETERMINED BY HOLDING CONTROLLING CORNERS AS SHOWN. THE WEST LINE OF THE EAST HALF OF LOT 4 WAS COMPUTED AS SHOWN IN THE SECTION BREAKDOWN DETAIL. FOUND CONTROLLING CORNERS AND DATA PER FOLDER'S 969, 1539, 1712 AND 1752 WERE HELD IN DETERMINATION OF SECTION 1 BREAKDOWN. THE CORNER NOTES TABLE CONTAINS ADDITIONAL INFORMATION ON CONTROLLING CORNER AND COMPUTATIONAL METHODS.


THE WEST EXTENSION IRRIGATION DISTRICT'S MAIN CANAL IS 200 FEET WIDE (100.00 FEET WIDE EACH SIDE OF CANAL CENTERLINE) PER THEIR DISTRICT MANAGER. THE CANAL LINING WAS MEASURED IN MULTIPLE LOCATIONS TO DETERMINE AVERAGE LINING WIDTH (21.6'). THIS WAS THEN SPLIT IN HALF TO DETERMINE THE CANAL CENTERLINE. THIS WAS USED IN CONJUNCTION WITH MEASUREMENT MADE TO POINTS OF TANGENCY AND CURVATURE TO DEVELOP THE CANAL ALIGNMENT SHOWN.

THE CANAL LATERAL CALLED FOR IN THE DEED DOCUMENT WAS SURVEYED BY DENNY EDWARDS IN FOLDER 1694. I FOUND AND ACCEPTED MONUMENTS HE SET ON THE CENTERLINE OF THE LATERAL TO CONTROL THE EASTERLY BOUNDARY OF MY CLIENTS PARCEL. THE LATERAL IS 50 FEET WIDE (25 FEET EACH SIDE OF CENTERLINE) PER THE WEST EXTENSION IRRIGATION DISTRICT.

THIS SURVEY WAS PERFORMED USING TWO TOPCON HIPER LITE+ GNSS UNITS OPERATED IN RTK MODE. THE BASIS OF BEARINGS IS NAD 83(2011) OREGON NORTH STATE PLANE AS ESTABLISHED BY GNSS MEASUREMENT BETWEEN THE SOUTH QUARTER CORNER AND SOUTHEAST CORNER OF SECTION 36, T5N, R26E. DISTANCES ARE GRID, UNITS ARE INTERNATIONAL FEET. TO COMPUTE GROUND DISTANCES, MULTIPLY REPORTED DISTANCES BY A CSF OF 1.00004273320280.

SECTION BREAKDOWN





KENNY LAND SURVEYING

KENNY LAND SURVEYING

P.O. BOX 447, HEPPNER, OR 97836 || 541-379-0242 || KENNYMATT@LIVE.COM

RECORD OF SURVEY

LOCATED IN THE NW 1/4 OF SECTION 1,

TOWNSHIP 4 NORTH, RANGE 26 EAST, W.M., MORROW COUNTY, OR.

CLIENT: **ELISHA AYLETT**

1943

PROJECT: 21-OR-13_AYLETT

DR: MPK

CH: MPK

DATE: MAY, 2021

SHEET 1 OF 1