

# RECORD OF SURVEY

## SURVEYOR'S NARRATIVE

THIS SURVEY WAS UNDERTAKEN IN OCTOBER OF 2020 AT THE REQUEST OF ALBERT AND SHEILA CORPUS TO MONUMENT THAT LAND DESCRIBED AND RECORDED AS PARCELS I AND II OF M-48876 MORROW COUNTY DEED RECORDS. THIS TOWNSHIP WAS ORIGINALLY SUBDIVIDED BY GLO DAVID UNDER CONTRACT 131 DATED JUNE 8, 1869, HE SET POSTS IN MOUNDS AND STONES, SOUTHWEST CORNER OF SECTION 23: THE FOUND AND RECOVERED 3 1/2 INCH IRON PIPE SET BY ASCHER (SEE SUR. NO. 71-K-111) WAS FOUND TO BE CORRECT BY KRUMBEIN (SEE SUR. NO. B-177-K). THIS 3 INCH IRON PIPE WAS HELD BY WELLS (SEE SUR. NO. C-489-K), IT WAS ALSO HELD FOR THIS SURVEY. SOUTHWEST CORNER OF SECTION 23: THE FOUND AND RECOVERED 3 INCH IRON PIPE WITH NO REFERENCE AS TO WHO SET IT WAS FOUND TO BE CORRECT BY KRUMBEIN (SEE SUR. NO. B-177-K). THIS 3 INCH IRON PIPE WAS HELD BY WELLS (SEE SUR. NO. C-489-K), IT WAS ALSO HELD FOR THIS SURVEY. NORTHEAST CORNER OF SECTION 23: THE FOUND AND RECOVERED BRASS CAP WAS SET BY LS 49865, LS 933 SET THIS CORNER (SEE SUR. NO. C-527-K), HE SET THE BRASS CAP IN PLACE OF FRALEY'S 1/2 INCH IRON ROD (SEE SUR. NO. C-198-K). THIS BRASS CAP WAS ALSO HELD BY WELLS (SEE SUR. NO. C-489-K) AND DELANO (SEE SUR. NO. 2013-38D), IT WAS ALSO HELD FOR THIS SURVEY. NORTH 1/4 CORNER SECTION 23: A 1/2 INCH IRON ROD WAS SET BY FRALEY (SEE SUR. NO. C-198-K). THIS CORNER WAS HELD BY WELLS (SEE SUR. NO. C-489-K), KRUMBEIN (SEE SUR. NO. B-177-K), GRIFFIS & WIGHTMAN (SEE SUR. NO. C-644-K) AND DELANO (SEE SUR. NO. 2013-38D), DELANO SET THE BRASS CAP IN PLACE OF THE 1/2 INCH IRON ROD. THIS BRASS CAP WAS HELD FOR THIS SURVEY. NORTHWEST CORNER OF SECTION 23: THIS CORNER HAS SEVERAL POSITIONS. FRALEY FOUND A SPIKE AND REPLACED IT WITH AN IRON ROD (SEE SUR. NO. C-198-K), BUISMAN RE-PROPORTIONED IT FROM THE SOUTHWEST CORNER OF SECTION 15, THE WEST 1/4 CORNER OF SECTION 14, THE NORTH 1/4 CORNER OF SECTION 23 AND THE SOUTHWEST CORNER OF SECTION 26 (SEE SUR. NO. C-148-K). WELLS RE-ESTABLISHED IT FROM THE NORTHWEST CORNER OF SECTION 22, THE WEST 1/4 CORNER OF SECTION 14, THE NORTH 1/4 CORNER OF SECTION 23 AND THE SOUTHWEST CORNER OF SECTION 23 (SEE SUR. NO. C-489-K). GRIFFIS & WIGHTMAN RESTORED THE POSITION OF THE FRALEY IRON ROD BASED ON TIES TO MONUMENTS HE SET FOR THE NORTH 1/4 CORNER OF SECTION 23 AND THE EAST 1/16 CORNER OF SECTION 23 (SEE SUR. NO. C-644-K) AND DELANO HELD THE GRIFFIS & WIGHTMAN POSITION (SEE SUR. NO. 2013-38D). THE BRASS CAP STAMPED "PLS 49865" WAS HELD FOR THIS SURVEY. THE NW 1/16 (THE SOUTHWEST CORNER OF THE CORPUS TRACT) WAS COMPUTED AT THE INTERSECTION POINT BETWEEN THE C-W 1/16 AND THE W 1/16, AND THE N 1/16 AND THE C-N 1/16. THE C-W-NW 1/64 (THE SOUTHWEST CORNER OF THE CORPUS TRACT) WAS COMPUTED AT THE MID POINT BETWEEN THE N 1/16 AND THE NW 1/16. THIS SURVEY WAS ACCOMPLISHED UTILIZING 2 TRIMBLE R-10 GNSS RECEIVERS. AN AUTONOMOUS POSITION WAS GENERATED ON THE BASE UNIT AND THE PREVIOUSLY MENTIONED SOUTHWEST AND SOUTHEAST FOUND CORNERS OF SECTION 23 WERE SUBSEQUENTLY USED FOR A SITE CALIBRATION, EACH CORNER WAS THEN LOCATED OR SET ON A 1 SECOND EPOCH WITH A FIXED SOLUTION. THE BASIS OF BEARING OF THIS SURVEY IS BETWEEN THE SOUTHWEST AND SOUTHEAST FOUND CORNERS OF SECTION 23 AND IS BASED ON SURVEY NUMBER C-489-K.

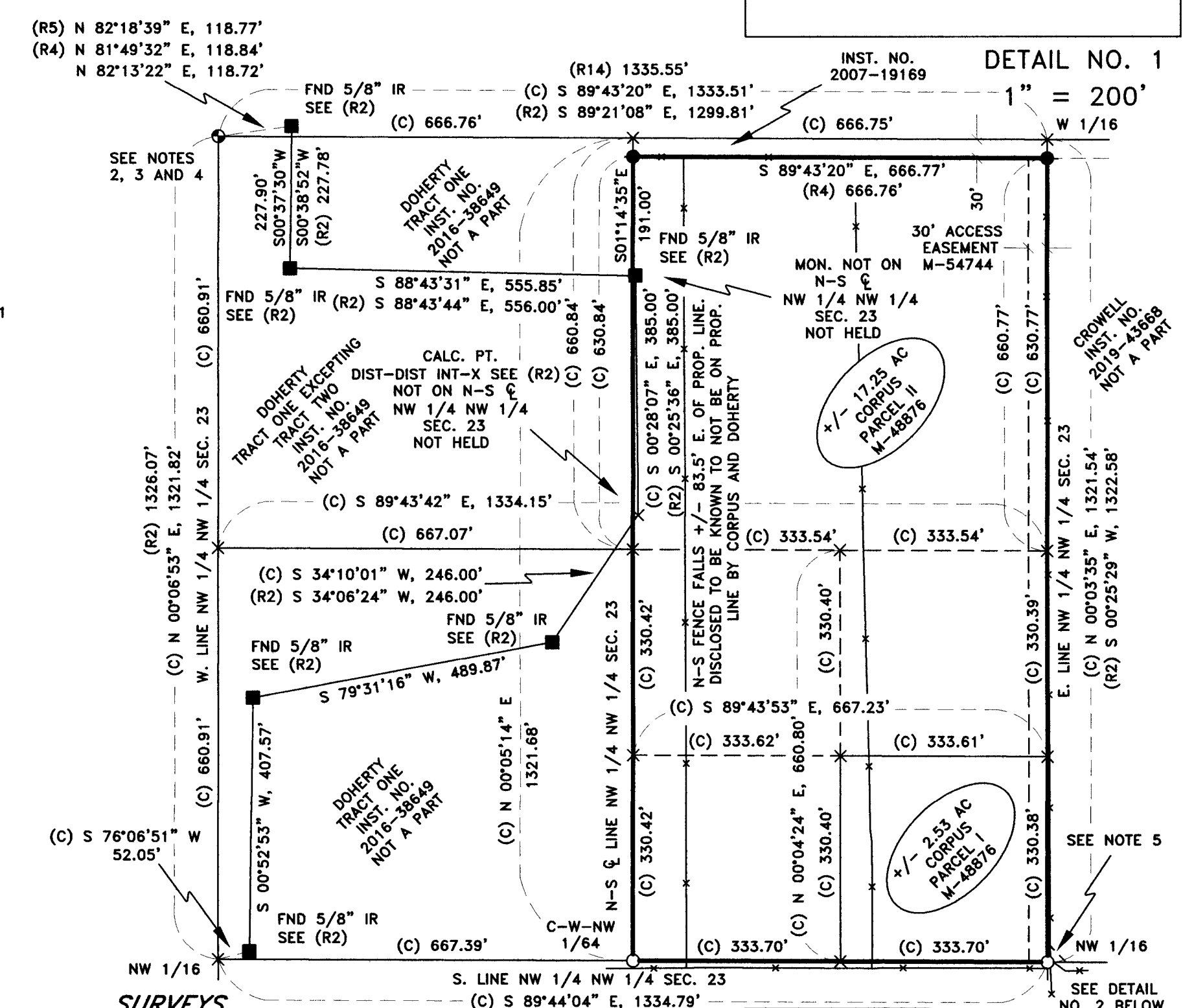
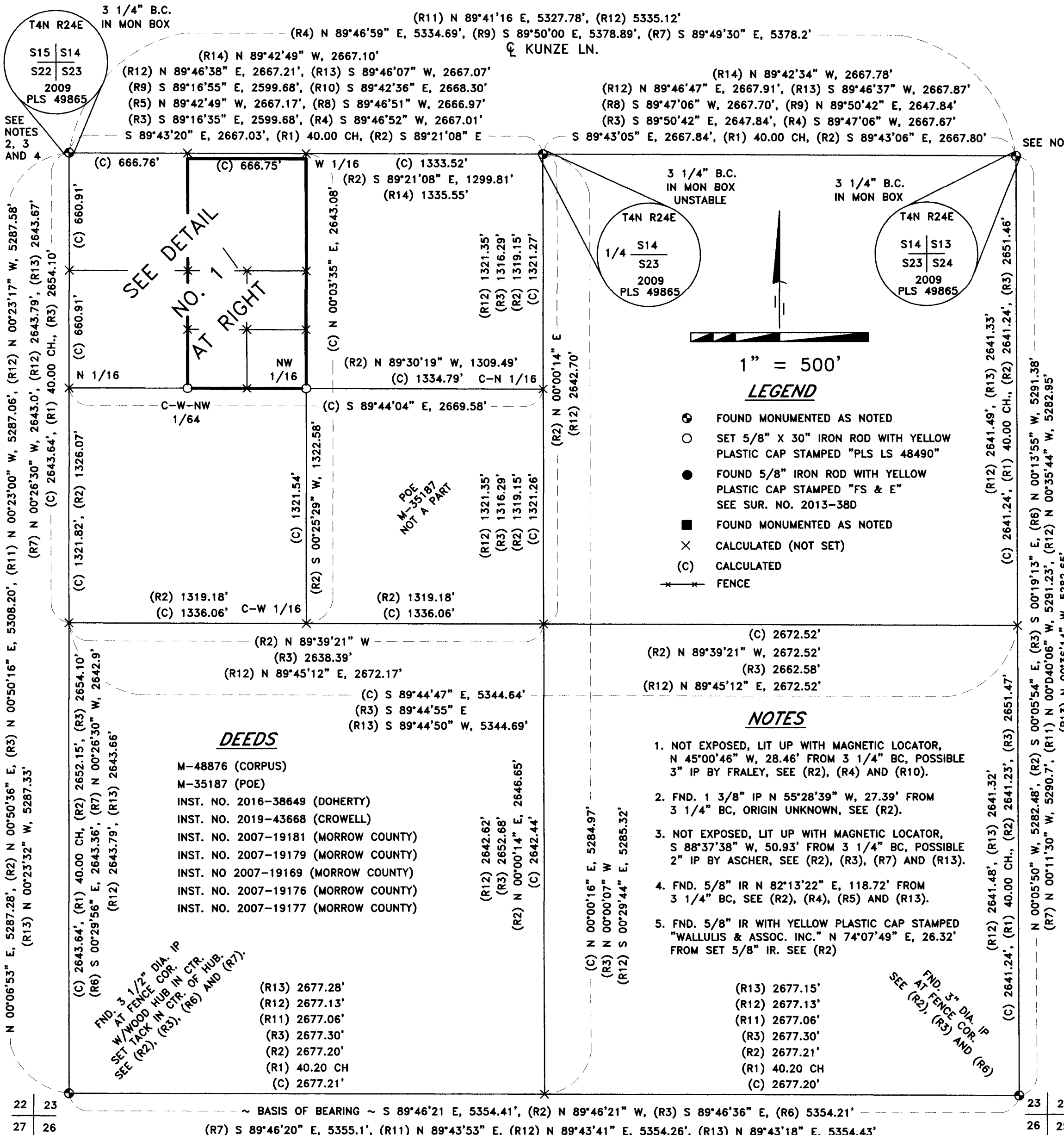
I CERTIFY THAT THIS IS A TRUE AND EXACT COPY OF THE ORIGINAL PLAT AS FILED IN MORROW COUNTY, OREGON.

*Keith P. Primm*  
KEITH P. PRIMM

COUNTY SURVEYOR STAMP

RECEIVED BY  
Morrow County Surveyor  
Date: 3-9-2021  
Rec'd By: MPK  
No.: 2021-1917C  
Folder No.: 1917

1917



**SURVEYS**

- GLO DAVID CONTRACT NO. 131 JUNE 8, 1869
- SUR. NO. C-489-K WELLS FOR EUCON CORP
- SUR. NO. B-177-K KRUMBEIN FOR TATONE
- SUR. NO. 2013-38D DELANO FOR MORROW CO. PUBLIC WORKS DEPT.
- SUR. NO. C-644-K GRIFFIS AND WIGHTMAN FOR U.S. ARMY CORPS OF ENGR.
- SUR. NO. 0015-C ANDERSON FOR LUMBERMANS WESTERN REAL ESTATE
- SUR. NO. 71-K-111 ASCHER FOR THE BOEING COMPANY
- SUR. NO. 1415 EDWARDS FOR MORROW COUNTY
- SUR. NO. C-148-K BUISMAN FOR LETRACE
- SUR. NO. C-198-K FRALEY
- SUR. NO. C-810-K CUNNINGTON FOR US DEPT. OF NAVY
- SUR. NO. C-960-E EDWARDS FOR TATONE
- SUR. NO. C-1169-E EDWARDS FOR RUSSELL
- SUR. NO. C-1266-E EDWARDS FOR HEIPLE-FINLEY
- SUR. NO. D-1215-E TOMKINS FOR CITY OF BOARDMAN
- SUR. NO. C-455-K KRUMBEIN FOR TRUDEAU
- SUR. NO. C-527-K KRUMBEIN FOR MCENTYRE

**REGISTERED PROFESSIONAL LAND SURVEYOR**  
*Keith P. Primm*  
OREGON  
JULY 12, 2005  
KEITH P. PRIMM  
48490  
EXPIRATION DATE: 12/31/22

**SURVEYOR'S CERTIFICATION**

I, KEITH P. PRIMM, A PROFESSIONAL LAND SURVEYOR IN THE STATE OF OREGON HEREBY CERTIFY THAT I HAVE SURVEYED THAT TRACT OF LAND DESCRIBED AND RECORDED AS PARCELS I AND II OF M-48876, MORROW COUNTY DEED RECORDS AND THAT THIS MAP CORRECTLY REPRESENTS A SURVEY CONDUCTED UNDER MY DIRECT SUPERVISION IN OCTOBER 2020, AND HAVE SET THE PROPER MONUMENTS AS ESTABLISHED BY O.R.S. 209.

**PRIMM LAND SURVEYING, INC.**

P.O. BOX 1322, 1340 N.E. 4TH  
HERMISTON, OR 97838  
BUI (541) 564-7887  
FAX (541) 567-8020  
brim@primmlandsurveying.com  
keith@primmlandsurveying.com

**CLIENT: CORPUS**

ROUTE 1, BOX 32 BOARDMAN, OR 97818

PROJECT: BOUNDARY SURVEY LOCATED IN THE NW 1/4 OF SEC. 23 TWP. 4N., RNG. 24 E.W.M. MORROW COUNTY, OREGON

JOB #: 2010003  
DATE: 19 OCT 20  
FB/PG: 44/16-17  
SHEET: 1 OF 1  
DRAWN: KPP  
APPROVED: KPP

1917